



Hillside Crescent, Leigh-On-Sea, SS9

BUTLER & STAG



Large Double Room on the top floor of this newly refurbished property with private kitchen and en-suite shower room.



- Top Floor En-Suite Double Room
- Newly Refurbished
- Private Shower Room with Storage
- Private Kitchenette
- Estuary Views

Well located for Chalkwell Station and Leigh Broadway the property also boasts estuary views.

The large room benefits from a private kitchen into a recess, and an en-suite shower room with excellent storage. There is also a communal garden and laundry room.

Available from 27th Jan.



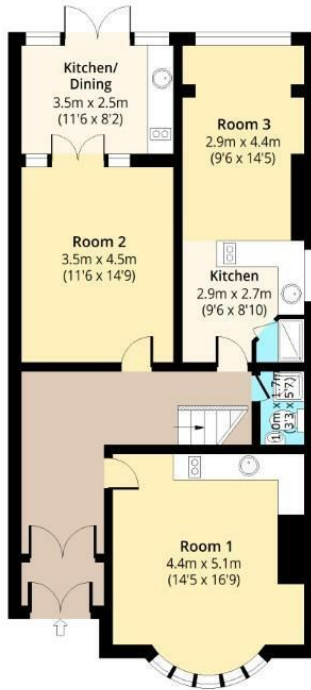


Hillside Crescent, SS9 1ER



Ground Floor

Approx. 89.09 Sq. meters (959 Sq. feet)



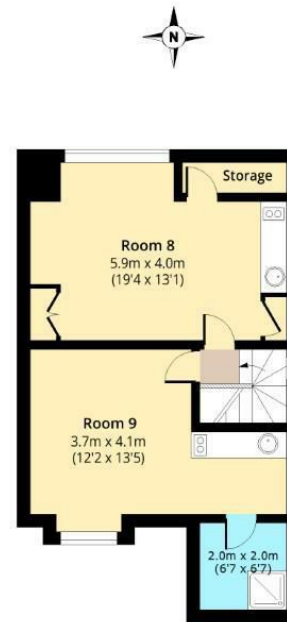
First Floor

Approx. 75.25 Sq. meters (810 Sq. feet)



Second Floor

Approx. 52.12 Sq. meters (561 Sq. feet)



Total area: approx. 216.46 Sq. meters (2330 Sq. feet) (Excluding Balcony)
 Total area: approx. 221.86 Sq. meters (2388 Sq. feet) (Including Balcony)
 For illustration purposes only - not to scale
www.lpaplus.com

BUTLER & STAG

☎ 020 8102 1236

🏠 508 Roman Road, Bow, London, E3 5LU

✉ bow@butlerandstag.com

www.butlerandstag.uk

IMPORTANT NOTICE - These particulars have been prepared in good faith and they are not intended to constitute part of an offer or contract. We have not performed a structural survey on this property and the services, appliances and specific fittings have not been tested. All photographs, measurements, floor plans and distances referred to are given as a guide and should not be relied upon.